
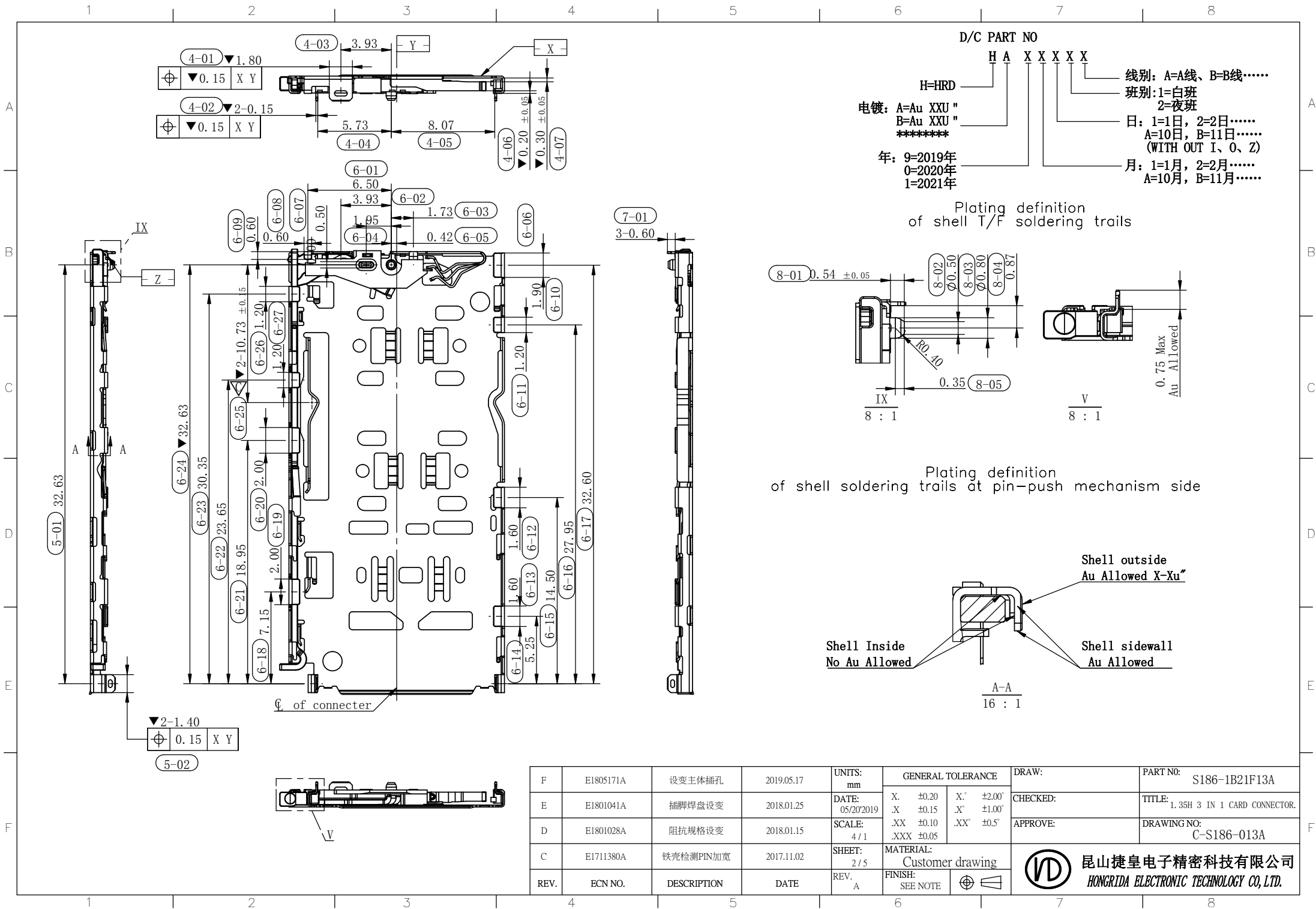


- NOTES:
- Finish
 - Contact:
 - Switch Area: 15u" Au Min;
 - Gold Flash on soldering area, 3~8u" Min.
 - Shell:
 - Soldering Area: 1u" Au Min.
 - Electical requirements:
 - Current rating: 0.3A per pin
 - Current voltage: 10V AC
 - Contact resistanc:
 - Switch contact initial 150mohm Max, After test: 175mohm Max.
 - Insulation resistance: 1 GOhm Min. 500VDC for 2 minutes.
 - Mechanical requirements:
 - Tray mating force: 12N Max. (with card);
Tray un-mating force: 4N Min (without card)
Tray ejection force: 15N Max. (with card)
 - Durability: 3000 cycles Min.
 - Environment requirements:
 - Operating temperature: -40° C to +85° C
 - Storage temperature: -40° C to +85° C
 - Burr: 0.02mm Max.
 - Dimensions with mark "▼" indicate the critical dimensions.
"▼" is CPK DIMENSIONS.

4	Pusher	1	SUS304-3/4H T=0.50mm	N/A
3	Crank	1	SUS304-3/4H T=0.40mm	N/A
2	Switch-Housing	1	LCP, UL94V-0, Black	N/A
	Switch-Detect	1	C7025-TM03 T=0.12mm	15u" Au Min plating on switch area 50~300u" Ni plating overall
1	Shell	1	SUS304-3/4H T=0.15mm	3u" Au Min plating on switch area 50~300u" Ni plating overall
ITEM	NAME	Q' TY	MATERIAL	PLATING

▼	0.08	Before IR
▼	0.10	After IR

F	E1805171A	设置主体插孔	2019.05.17	UNITS: mm	GENERAL TOLERANCE		DRAW:	PART NO:
E	E1801041A	插脚焊盘设置	2018.01.25	DATE: 05/20/2019	X. ±0.20	X.' ±2.00'	CHECKED:	TITLE: 1.35H 3 IN 1 CARD CONNECTOR.
D	E1801028A	阻抗规格设置	2018.01.15	SCALE: 4/1	.X ±0.10	.X' ±0.5'	APPROVE:	DRAWING NO: C-S186-013A
C	E1711380A	铁壳检测PIN加宽	2017.11.02	SHEET: 1/5	.XXX ±0.05			
REV.	ECN NO.	DESCRIPTION	DATE	REV.	MATERIAL: Customer drawing	FINISH: SEE NOTE	 昆山捷皇电子精密科技有限公司 HONGRIDA ELECTRONIC TECHNOLOGY CO., LTD.	



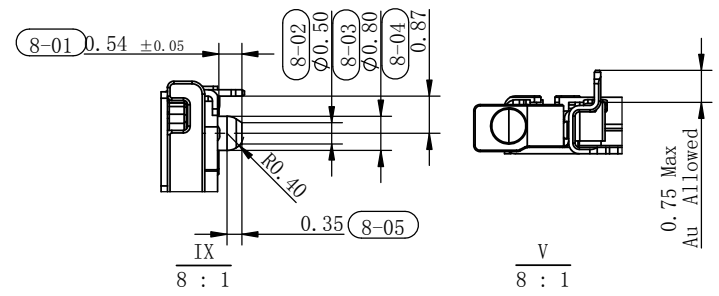
D/C PART NO

H A X X X X
 H=HRD
 电镀: A=Au XXU "
 B=Au XXU "

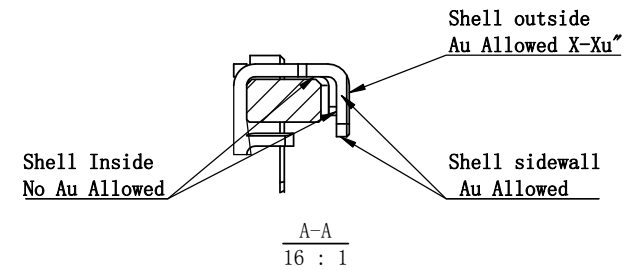
 年: 9=2019年
 0=2020年
 1=2021年

线别: A=A线、B=B线.....
 班别: 1=白班
 2=夜班
 日: 1=1日, 2=2日.....
 A=10日, B=11日.....
 (WITH OUT I、O、Z)
 月: 1=1月, 2=2月.....
 A=10月, B=11月.....

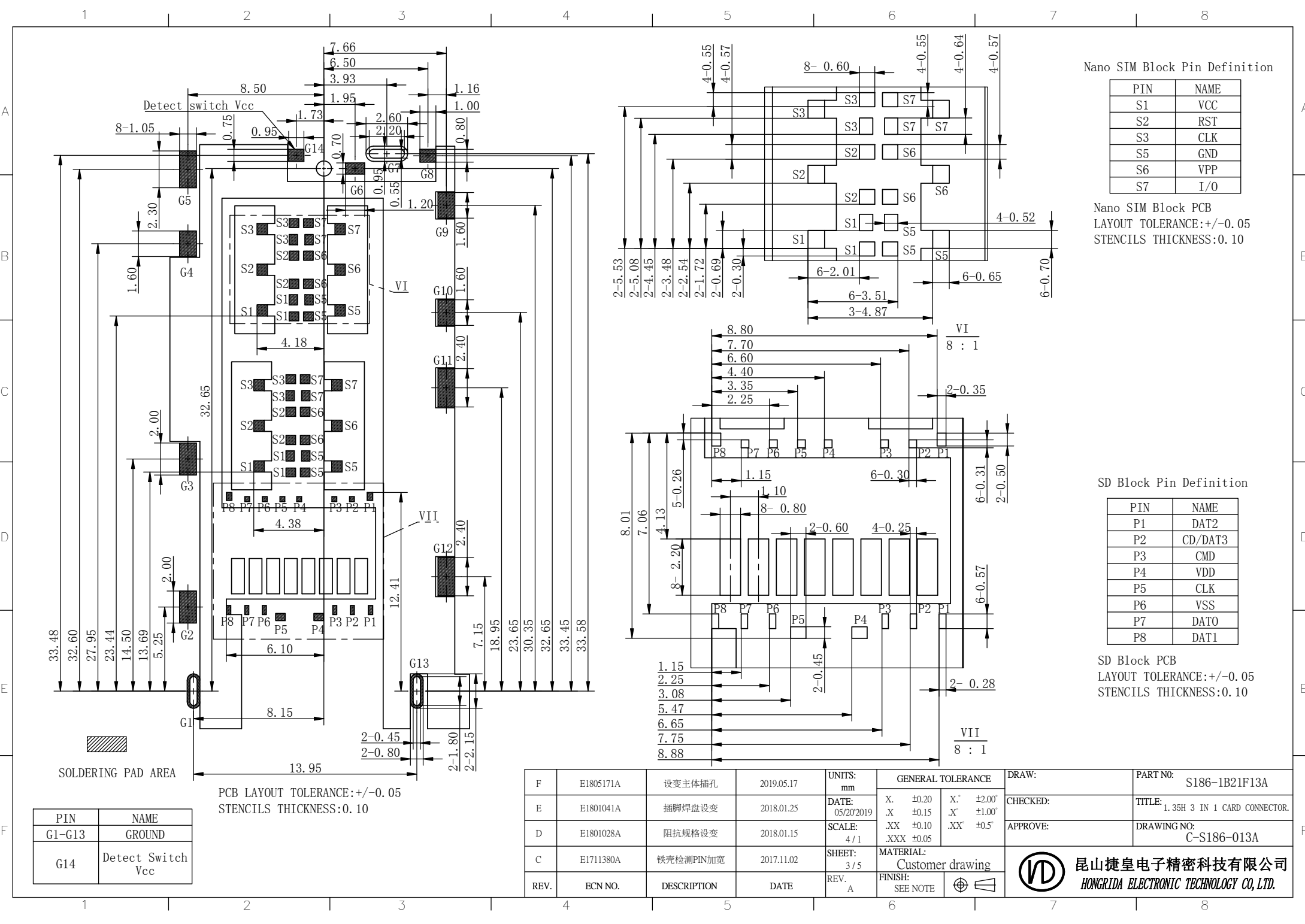
Plating definition
 of shell T/F soldering trails



Plating definition
 of shell soldering trails at pin-push mechanism side



F	E1805171A	设变主体插孔	2019.05.17	UNITS: mm	GENERAL TOLERANCE	DRAW:	PART NO:
E	E1801041A	插脚焊盘设变	2018.01.25	DATE: 05/20/2019	X. ±0.20 X. ±2.00 .X ±0.15 .X ±1.00	CHECKED:	TITLE: 1.35H 3 IN 1 CARD CONNECTOR.
D	E1801028A	阻抗规格设变	2018.01.15	SCALE: 4/1	.XX ±0.10 .XX ±0.5 .XXX ±0.05	APPROVE:	DRAWING NO: C-S186-013A
C	E1711380A	铁壳检测PIN加宽	2017.11.02	SHEET: 2/5	MATERIAL: Customer drawing	昆山捷皇电子精密科技有限公司 HONGRIDA ELECTRONIC TECHNOLOGY CO., LTD.	
REV.	ECN NO.	DESCRIPTION	DATE	REV. A	FINISH: SEE NOTE		



Nano SIM Block Pin Definition

PIN	NAME
S1	VCC
S2	RST
S3	CLK
S5	GND
S6	VPP
S7	I/O

Nano SIM Block PCB
LAYOUT TOLERANCE: +/-0.05
STENCILS THICKNESS:0.10

SD Block Pin Definition

PIN	NAME
P1	DAT2
P2	CD/DAT3
P3	CMD
P4	VDD
P5	CLK
P6	VSS
P7	DAT0
P8	DAT1

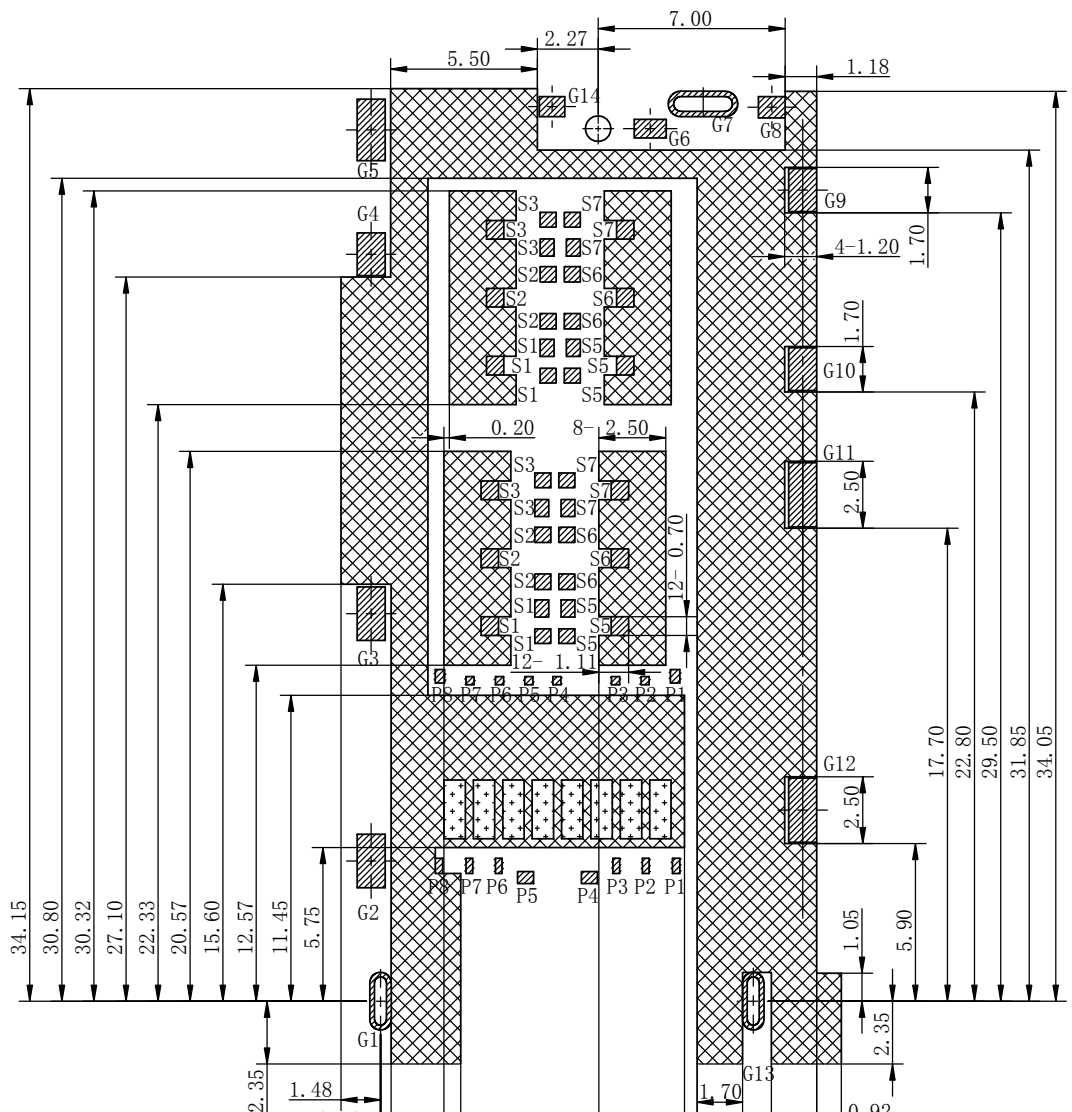
SD Block PCB
LAYOUT TOLERANCE: +/-0.05
STENCILS THICKNESS:0.10

PIN	NAME
G1-G13	GROUND
G14	Detect Switch Vcc

PCB LAYOUT TOLERANCE: +/-0.05
STENCILS THICKNESS:0.10

F	E1805171A	设置主体插孔	2019.05.17	UNITS: mm	GENERAL TOLERANCE		DRAW:	PART NO:
E	E1801041A	插脚焊盘设置	2018.01.25	DATE: 05/20/2019	X. ±0.20	X' ±2.00'	CHECKED:	TITLE: 1.35H 3 IN 1 CARD CONNECTOR.
D	E1801028A	阻抗规格设置	2018.01.15	SCALE: 4/1	.X ±0.15	.X' ±1.00'	APPROVE:	DRAWING NO: C-S186-013A
C	E1711380A	铁壳检测PIN加宽	2017.11.02	SHEET: 3/5	.XX ±0.10	.XX' ±0.5'	MATERIAL: Customer drawing	
REV.	ECN NO.	DESCRIPTION	DATE	REV. A	FINISH: SEE NOTE			

昆山捷皇电子精密科技有限公司
 HONGRIDA ELECTRONIC TECHNOLOGY CO., LTD.

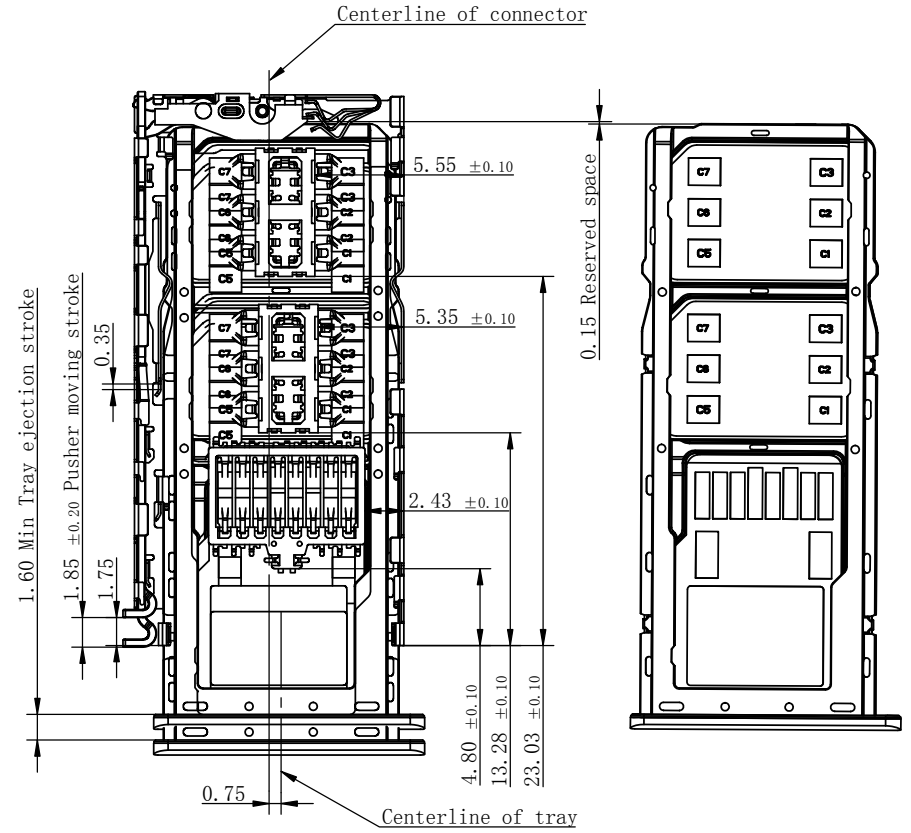
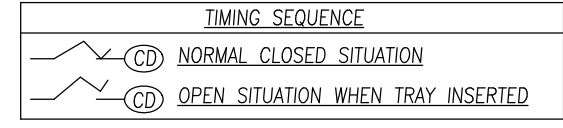


RECOMMENDED PCB LAYOUT
(NO PATTERNS)
(TOLERANCE: +/-0.05)

- SOLDERING PAD AREA
- NO PATTERNS
- KEEP OUT AREA

1.Touch area of contact tips, no electrical function and only for mechanical function.
2.No first PCB-Layercircuit in the area.

0.40
2.37
3.00
8.17
11.38
11.85
14.63
16.33



F	E1805171A	设变主体插孔	2019.05.17	UNITS: mm	GENERAL TOLERANCE		DRAW:	PART NO:
E	E1801041A	插脚焊盘设变	2018.01.25	DATE: 05/20/2019	X. ±0.20	X.' ±2.00'	CHECKED:	TITLE: 1.35H 3 IN 1 CARD CONNECTOR.
D	E1801028A	阻抗规格设变	2018.01.15	SCALE: 4/1	.XX ±0.10	.XX' ±0.5'	APPROVE:	DRAWING NO: C-S186-013A
C	E1711380A	铁壳检测PIN加宽	2017.11.02	SHEET: 4/5	MATERIAL: Customer drawing		昆山捷皇电子精密科技有限公司 HONGRIDA ELECTRONIC TECHNOLOGY CO., LTD.	
REV.	ECN NO.	DESCRIPTION	DATE	REV. A	FINISH: SEE NOTE			